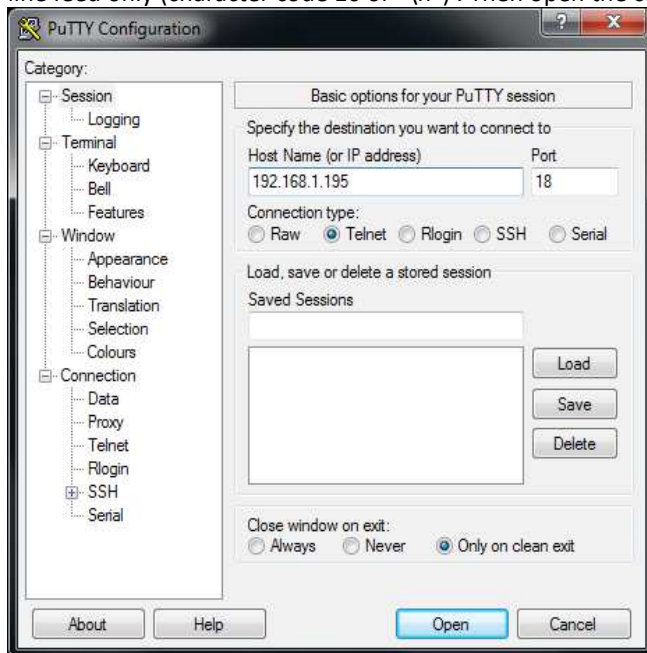
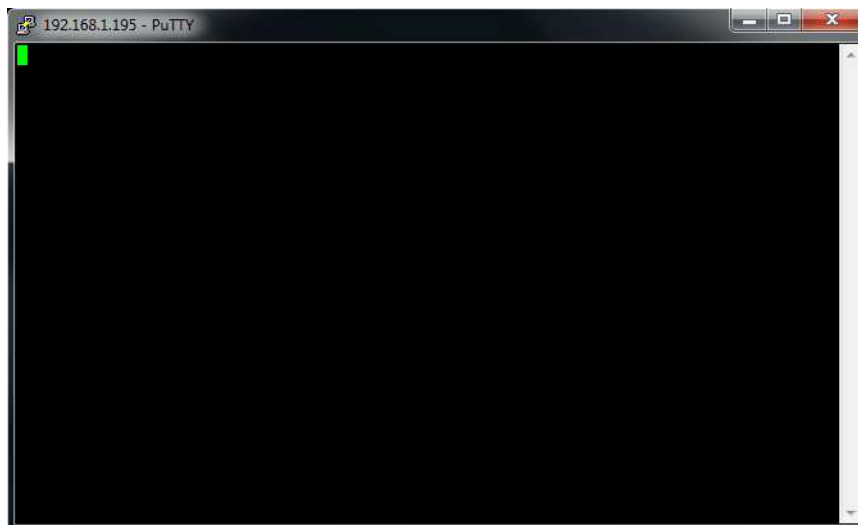


Telnet using PuTTY

1. Set up the connection. Select telnet, enter the device's IP address and port 18. If using other terminals than PuTTY, it might be necessary to set the correct line end. Valid settings are carriage return + line feed (character codes 13, 10 or "\r\n") or line feed only (character code 10 or "\n"). Then open the connection.



2. The telnet window appears. Press the enter key, this will reset the device's command parser. This is necessary since some terminal programs send a "welcome" or "open" message that must be terminated.



3. Talk with the instrument. Just enter commands or queries. Responses to queries will appear in the terminal.

